

## Do Now

- **BE READY TO ACT! PREPARE A PERSONAL CHECK LIST** of things to take and do before you leave. (See RED CROSS & FEMA for suggested lists).
- **IDENTIFY OPTIONAL EVACUATION ROUTES AND WHERE TO STAY.** Lanier Bridge may be closed; you may be routed away from your preferred hotel; ensure pet and other special needs can be met.
- **PLAN FOR NO POWER, BATTERY OR INTERNET.** Print or bring paper maps, telephone numbers, addresses, codes or passwords, and other relevant info.
- **COPY IMPORTANT DOCUMENTS** like insurance policies, medical information for you and your pets; save in the cloud or take them with you.
- **TAKE PICTURES OF YOUR HOUSE & CONTENTS** to take with you.
- **SIGN UP FOR JIA'S NIXLE EMERGENCY NOTIFICATION SYSTEM** -- see back page for more information.
- **DEVELOP FAMILY & FRIEND COMMUNICATION/REUNIFICATION PLAN.** Determine how to connect, where to meet if separated when evacuation order hits.
- **CONTACT NEIGHBORS TO HELP WITH PLANS, AS NEEDED.**

## Timely Information

### Jekyll Island Authority

[www.jekyllisland.com/livinghere](http://www.jekyllisland.com/livinghere)

### Emergency Notifications

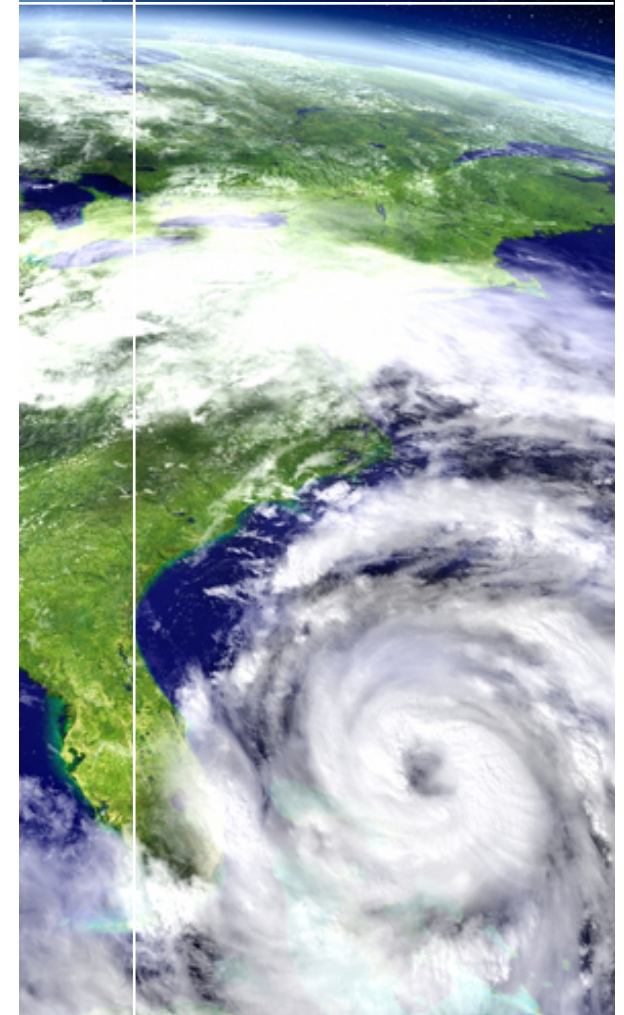
JIA emergency alerts are sent via **Nixle**, a communications service that replaced all emailed notices from JIA and Jekyll Island's use of the Glynn County Code Red System.

To register for **Nixle**, go to [www.jekyllisland.com/emergency](http://www.jekyllisland.com/emergency) and input your contact information (be sure to enter 31527 for zip code). You will receive a confirmation alert from Nixle. Next, click on (or go to) [www.nixle.com](http://www.nixle.com) to sign up/complete your registration, and confirm your options for alerts and notifications. If you have any questions, you may email [support@nixle.com](mailto:support@nixle.com) or call them directly at 877-649-5362.

To continue receiving Glynn County's CODE RED messages, go to [www.glynncounty.org](http://www.glynncounty.org) and click on the link provided.

## Hurricane Evacuation

Public Evacuation and  
Emergency Notification Options  
For Jekyll Island Residents



## When Evacuation Seems Likely

- **MAKE RESERVATIONS EARLY!**  
Remember, Florida may evacuate first. Reservations may be hard to get. Be sure your desired location can accommodate your needs (pets, disabilities, allergies, access to medical care, etc.)
- **PACK YOUR “TO GO” BAG** with essential personal items like medicine (for at least a week), water and non-perishable food. Pack personal checklist items (paper maps, contact and insurance info, home content pictures, and phone chargers).
- **PACK FOR YOUR PETS**, including food, water, medicine, leashes and rabies certificate.
- **GET CASH IN SMALL BILLS**
- **FILL YOUR CAR WITH FUEL**
- **TELL FAMILY & FRIENDS WHERE YOU ARE GOING**
- **PUT AWAY OUTDOOR FURNITURE AND SECURE OTHER ITEMS** like outdoor planters, grills, bicycles or signs. Place important indoor items away from windows and off the floor.
- **CHECK ON YOUR NEIGHBORS**  
Help ensure everyone has a safe plan, including guests and neighbors. Offer to carpool, help with hotel reservations, ask if they've gathered important information and contact details.

## During Evacuation

- **LEAVE WHEN AN EVACUATION IS ORDERED. DON'T DELAY!**
- **STAY IN CONTACT WITH JIA AND GLYNN COUNTY THROUGH EMERGENCY NOTIFICATIONS** for updated information, closures and instructions.
- **ENSURE HOUSE & CONTENTS ARE SECURED.** Lock all doors and windows. Unplug all nonessential appliances and devices. Place unused vehicles, golf carts or buggies in garage, if possible.
- **NEVER RUN A GENERATOR INSIDE YOUR HOME OR GARAGE.** Check manufacturer's directions for safe operating practice and best approach to connect indoor utilities (lights, refrigerator and other appliances).
- **CHECK ON YOUR NEIGHBORS.** Their needs and/or plans may change, and they may need some new or different assistance.



## Returning

- **CHECK WITH JIA, GLYNN COUNTY AND GEORGIA STATE OFFICIALS BEFORE LEAVING YOUR EVACUATION LOCATION.** Make sure required counties, roads and exits are open for public or resident use.
- **DO NOT RETURN UNTIL ACCESS TO JEKYLL ISLAND IS AUTHORIZED BY JIA**
- **FILL UP WITH FUEL BEFORE LEAVING AND FREQUENTLY ENROUTE.** Fuel near or on Jekyll may be out for several days or longer, so return with as much as possible.
- **BRING WATER, BATTERIES & OTHER NON-PERISHABLE ITEMS BACK HOME WITH YOU.** Power or water may go out frequently after a storm. Food and other supplies may require days or weeks to be restocked.
- **STAY OFF LOCAL ROADS DURING CLEAN-UP**
- **AVOID DOWNED POWER LINES**
- **ONLY USE GENERATORS OUTSIDE AND AWAY FROM YOUR HOME**
- **CHECK ON YOUR NEIGHBORS**